

iDRIVE®

CENTRALISE • OPTIMISE • ECONOMISE

Solo CC / CV

- Advanced patented dimming technology
- Suitable for leading and trailing edge dimmers
- Short circuit, over current & over voltage protection
- Recyclable with no hazardous substances
- Fireproof polycarbonate chassis
- Double insulated (Class II) for safety
- Convenient screw terminals
- Standard and extended 5-year quality warranty



Product Overview

The market leading iDrive® LED driver range offers the iDrive® Solo CC/CV a high performance driver available in constant current and constant voltage versions. This device comes in a small footprint capable of powering various LED types efficiently from a mains supply.

All iDrive® LED drivers use a high efficiency single stage topology, which ensures cool operation and long life. The compact, fire retardant enclosure complete with suitable cable clamp end caps allow the drivers to be used safely in both internal and remote type fixture applications.

Approvals

Safety: EN61347-1 & EN61347-2-13

EMI: EN55015 Class B

Harmonic current emissions: EN61000-3-2/3

Electromagnetic immunity:

EN61547, EN55024 & EN61000-4-2/3/4/6/8/11

Electrical Specifications

Input

Input Voltage Range: 220 – 240V ac rms
 Input Frequency: 48Hz to 62Hz
 Power Factor: >0.95 max @ Full load
 Efficiency: 83% (typical)
 Connection: Screw terminal blocks
 Insulation Class: II

Mechanical

Mounting: One 4mm fixing hole
 Construction: Polycarbonate UL94-V0 rated (Low Smoke and Halogen Free)
 Wire size: 0.5 to 3mm² (12 to 26 AWG)
 Wire Strip Length: 4 to 5mm
 Screw Torque: 0.45Nm (4 lb-inch)
 IP rating: IP20

Environmental

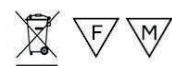
Operating Ambient Temperature: -30°C to +45°C
 Storage Ambient Temperature: -40°C to +70°C
 Humidity: 85% max non-condensing

Dimensions: 91 x 41 x 19 mm

Weight: 60 grams

Part Numbers

Model	Function	Power	Voltage out	Current	Efficiency
Constant Current Models					
IDM2011150700	Dimmable	11W	10-15V	700mA	>83%
IDM2014131050	Dimmable	14W	8-13V	1050mA	>83%
IDS2014200700	Non-Dimmable	14W	10-20V	700mA	>83%
IDS2014131050	Non-Dimmable	14W	8-13V	1050mA	>83%
Constant Voltage Models					
IDCV2014121200	Dimmable	14W	12V fixed	1200mA (max)	>78%
IDCV2014240600	Dimmable	14W	24V fixed	600mA (max)	>80%



11 - 14W STANDARD & DIMMABLE DRIVER



CENTRALISE • OPTIMISE • ECONOMISE

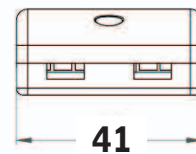
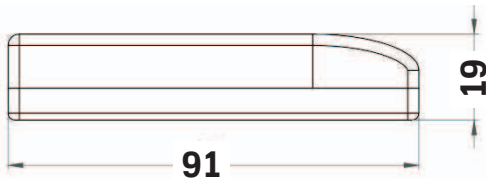
Solo CC / CV

Compatible Dimmers

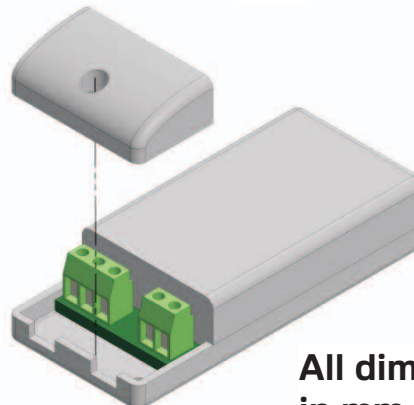
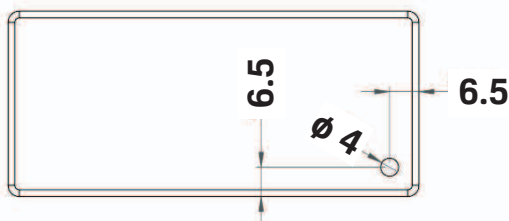
Dimmer compatibility correct at time of testing.
Dimmer specifications may change without warning.

Brand	Part No.	Type	Country
LUTRON	SKYLARK: S-600, S600P, SF-10P, SF-12P-277	Leading	USA
	CREDENZA TT300, DVF-103P-277		
REV	136231	Leading	Germany
BUSCH	6513 U-102	Trailing	Europe
EVERFLOURISH	EF700DC	Trailing	Germany
JUNG	225 NV DE, 225TMD, 243EX, 244EX	Leading	Europe
ROB	L2503G2W	Leading	Ireland
TCL	A6, M2	Leading	China
CLIPSAL	E3032HD, 32E450UDM, 32E450TM	Trailing	Australia
PEHA	434	Leading	Germany
LEGRAND	A8051	Leading	France
MASANO	A6B11	Trailing	Australia
BE LICHTREGLER	T39.01, T46		Korea
LEVITON	6615-P, 6633-P, IP106	Leading	USA
BERKER	Tronic-Dreh Dimmer 286710		Germany
VARILIGHT	IQI401M, JQP401W, JQP251W	Trailing	Europe

Product Dimensions



Hole in base to fix unit.
Accessed by removing terminal cover/cable clamp



All dimensions in mm



www.istl.com

t: +44 (0)121 362 1810 e: sales@istl.com

Integrated System Technologies Ltd., Serenity House, 31 Gate Lane, Sutton Coldfield B73 5TR

iDrive® products are covered by IST's worldwide patent portfolio. For more information please refer to www.istl.com/patents.

11 - 14W STANDARD & DIMMABLE DRIVER

Version: V1.1