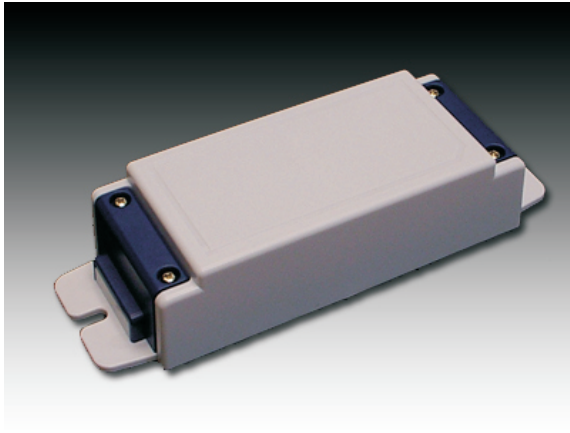


SINGLE CHANNEL 11-40W LED DRIVER



Main Features

- High PFC and efficiency driver
- Selectable currents between 175 to 1200mA
- Compact design housing for easy installation
- Threefold PSU protection
- CE 61347-2-13 & 62384:2006 approved

Product Overview

The market leading iDrive® LED driver range now offers the iDrive® MultiS. The iDrive® range is optimized for use with all good quality high powered LED products such as LUXEON, Cree, Seoul, Nichia and OSRAM.

The new iDrive® MultiS range offers high PFC and efficiency in various wattage outputs between 11W and 40W. The MultiS LED driver operates a single channel supplying various user selectable forward currents between 175mA to 1200mA (see product table page 3).

With many different driver DC voltage configurations, the MultiS enables each channel to contain a specific number of LEDs for maximum efficiency. The MultiS range offers threefold protection: Short circuit; over voltage and open circuit.

The MultiS is ideal for all types of LED lighting products including applications such as dichroic or halogen LED replacements and LED downlighters.

Protection

Over Load Protection
Short Circuit Protection
Open Circuit Protection

Standards

EN 61347-2-13, EN55015:2006,
EN 61000-3-2, EN 61547,
EN 61047, EN 62384:2006

Approval

CE, EMC, FCC Class B

Electrical Specifications

Input

Input Voltage Range: 110V AC, 230V AC, 277V AC
Input Frequency: 50Hz / 60Hz
Consumption: See table page 3
Power Factor: >0.9 @ Full load
Efficiency: 82-87% max at full load
Connection: Mains AC loop-in loop-out, 5-pin terminal block
Insulation Class: 1
Stand-by Power: <1W
Current Regulation: <5% current tolerance <10% on all outputs

Output options

See page 3

Control Input

Dimming control: Auto detection of either Trailing or Leading Edge
Dimming Range: <10% to 100% of output load current

Mechanical

Mounting: Two 5mm fixing holes
Construction: ABS Housing at IP 20 or IP64

Environmental

Operating Ambient Temperature: -20°C to + 50°C
Storage Ambient Temperature: -10°C to + 70°C
Relative Humidity: 80% MAX
Lifetime (failure after 50,000 hours): 5%
Lifetime (failures after 50,000 hours): 5%

Dimensions:

151 x 50.5 x 31 mm approx

Weight:

180 grams



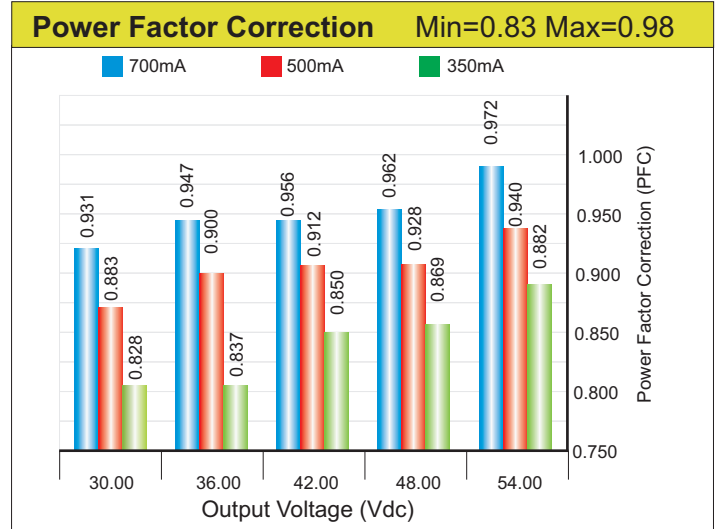
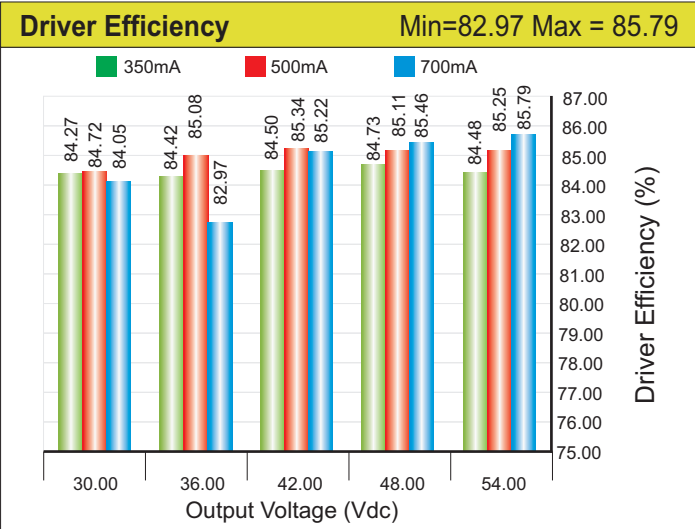
www.istl.com



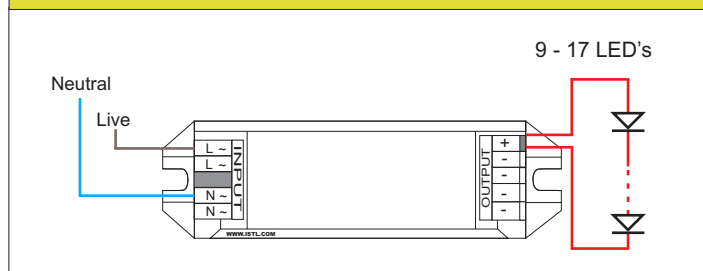
SINGLE CHANNEL 11 - 40W LED DRIVER

Typical iDrive MultiS Performance

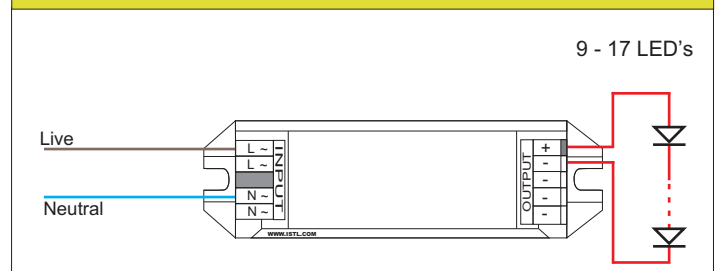
Results for model: IDS038541



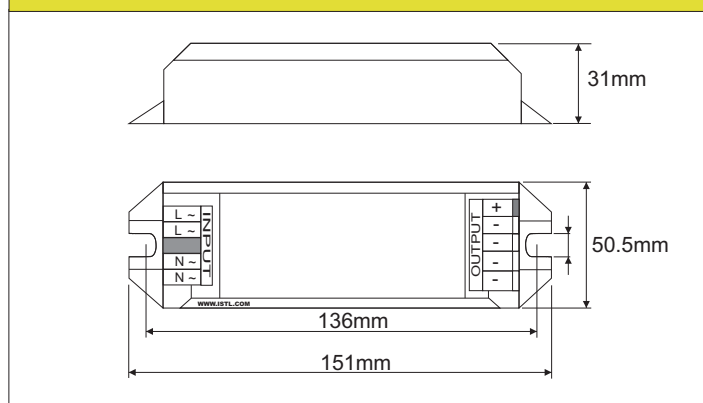
Wiring Diagram for MultiS



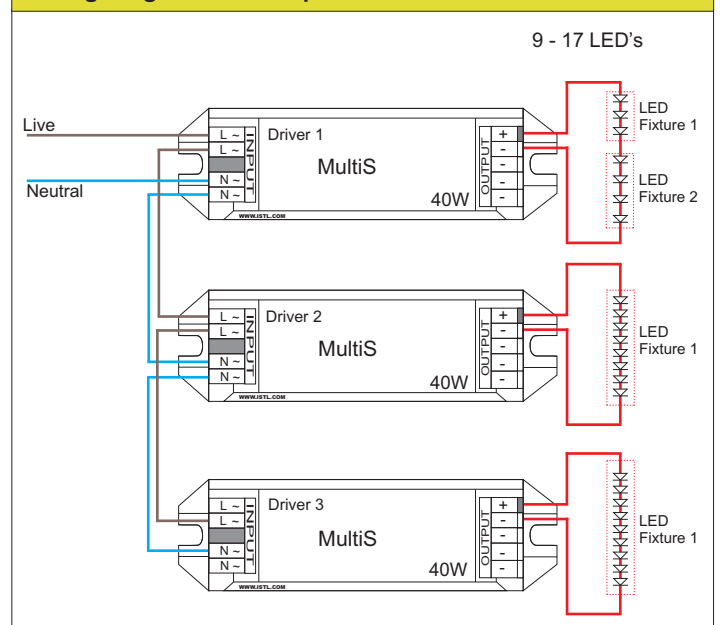
Wiring Diagram for MultiS



Dimensions



Wiring Diagram for Multiple Drivers



Applications

Indoor, Outdoor, Spot, Decorative and downlight applications:

Dining	Shops	Office	Architectural
Reading	Restaurants	Kitchen	Bathroom
Living	Museum		

www.istl.com



SINGLE CHANNEL 11 - 40W LED DRIVER

iDrive MultiS Range

Model Selection Table

Model	Uin (AC)	Frequency	PFC	Pout (W)	Vout (DC)	Iout (mA)	Pin (W)	Ta	Tc
IDS011151	110V	50/60 Hz	0.95 max	3...11	9 ~ 15	350/500/700	4...13	50	80
IDS011152	230V	50/60 Hz	0.95 max	3...11	9 ~ 15	350/500/700	4...13	50	80
IDS011153	277V	50/60 Hz	0.95 max	3...11	9 ~ 15	350/500/700	4...13	50	80
IDS012481	110V	50/60 Hz	0.95 max	7...12	42 ~ 48	175/200/225/250	8...14	50	80
IDS012482	230V	50/60 Hz	0.95 max	7...12	42 ~ 48	175/200/225/250	8...14	50	80
IDS012483	277V	50/60 Hz	0.95 max	7...12	42 ~ 48	175/200/225/250	8...14	50	80
IDS014121	110V	50/60 Hz	0.95 max	5...14	9 ~ 12	600/800/1000/1200	6...17	50	80
IDS014122	230V	50/60 Hz	0.95 max	5...14	9 ~ 12	600/800/1000/1200	6...17	50	80
IDS014123	277V	50/60 Hz	0.95 max	5...14	9 ~ 12	600/800/1000/1200	6...17	50	80
IDS015151	110V	50/60 Hz	0.95 max	3...15	9 ~ 15	350/500/700/1000	4...18	50	80
IDS015152	230V	50/60 Hz	0.95 max	3...15	9 ~ 15	350/500/700/1000	4...18	50	80
IDS015153	277V	50/60 Hz	0.95 max	3...15	9 ~ 15	350/500/700/1000	4...18	50	80
IDS016221	110V	50/60 Hz	0.95 max	12...16	16 ~ 22	720	13...19	50	80
IDS016222	230V	50/60 Hz	0.95 max	12...16	16 ~ 22	720	13...19	50	80
IDS016223	277V	50/60 Hz	0.95 max	12...16	16 ~ 22	720	13...19	50	80
IDS020291	110V	50/60 Hz	0.95 max	5...20	15 ~ 29	350/500/700	6...24	50	80
IDS020292	230V	50/60 Hz	0.95 max	5...20	15 ~ 29	350/500/700	6...24	50	80
IDS020293	277V	50/60 Hz	0.95 max	5...20	15 ~ 29	350/500/700	6...24	50	80
IDS027271	110V	50/60 Hz	0.95 max	5...27	15 ~ 27	350/500/700/1000	6...32	50	80
IDS027272	230V	50/60 Hz	0.95 max	5...27	15 ~ 27	350/500/700/1000	6...32	50	80
IDS027273	277V	50/60 Hz	0.95 max	5...27	15 ~ 27	350/500/700/1000	6...32	50	80
IDS027391	110V	50/60 Hz	0.95 max	11...27	30 ~ 39	350/500/700	12...32	50	80
IDS027392	230V	50/60 Hz	0.95 max	11...27	30 ~ 39	350/500/700	12...32	50	80
IDS027393	277V	50/60 Hz	0.95 max	11...27	30 ~ 39	350/500/700	12...32	50	80
IDS038541	110V	50/60 Hz	0.95 max	11...38	30 ~ 54	350/500/700	12...45	50	80
IDS038542	230V	50/60 Hz	0.95 max	11...38	30 ~ 54	350/500/700	12...45	50	80
IDS038543	277V	50/60 Hz	0.95 max	11...38	30 ~ 54	350/500/700	12...45	50	80